

# LIGHTEN

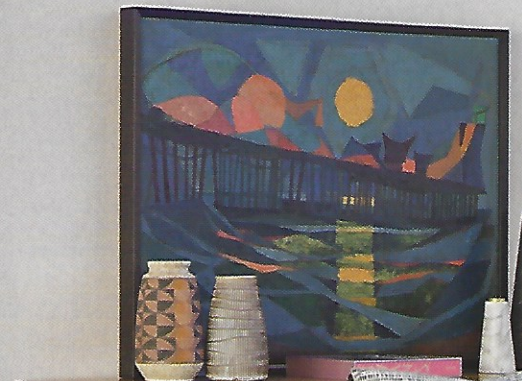
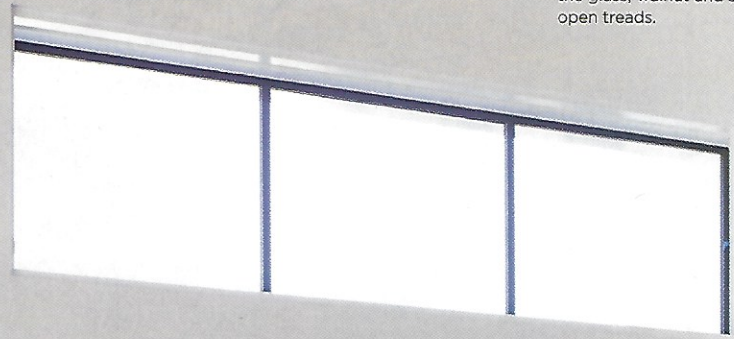
# UP



Southern California  
design firm  
BONESTEEL  
TROUT  
HALL infuses  
a sun-drenched  
NEWPORT  
BEACH  
home with their  
COASTAL-  
MEETS-COOL  
DESIGN

Photography by KARYN R. MILLET  
Written by KERSTIN CZARRA

Steel beams were painted white to play off the warmth of the walnut ceiling. The rug is from **SILK ROAD-ORIENTAL RUG** and the tables are from **THE FUTURE PERFECT**. The **FLEXFORM** sofa is a cozy spot with an array of **GARDE** throw pillows. A c. 1958-1960 painting by movie studio artist **EDGAR O. KIECHLE** sits atop a custom sideboard by **BONESTEEL TROUT HALL**. *Opposite:* A three-story rope-art installation by L.A. artist **MEGAN GECKLER** was commissioned by the owners and is set against a textured brick wall and highlights the glass, walnut and steel stairwell with open treads.



A traditional exterior fits the tone of the neighborhood and playfully juxtaposes the more modern interior. The patio furniture is by **DAVID SUTHERLAND** with **PERENNIALS** fabric.





The airy kitchen and dining area are open to the family's main living area. A **LINDSEY ADELMAN** sculptural branch fixture floats above the dining table with **JOSEPH JEUP** leather chairs with outdoor fabric. The dining-room rug is from **SILK ROAD ORIENTAL RUG**. The stools are **HARBINGER**. *Below:* The owners have a passion for contemporary art and have long worked with consultant **ANNE MENNEALY** to source unique pieces. In the sleek entry, a lightbox by L.A. artist **SHANA LUTKER** welcomes guests.

Pacific Palisades-based designers Heidi Bonesteel, Michele Trout and Jill Hall are known for their stylistic mastery of laid-back glamour. Born and raised in Southern California, the designers' spaces balance relaxed airiness with unexpected, modern touches for results imbued with seemingly effortless cool—not unlike the women themselves. (They're those girlfriends who know the right surf spots, farmers markets, and buzzy city restaurants and boutiques.) "Our office is a tree house with ocean views, so nature really inspires us," says Bonesteel. "But we're 10 miles from downtown, so there's that urban culture influence, too."

Bonesteel and Trout drew upon their signature aesthetic for their most recent project: a luminous Newport Beach home for a family of eight. A dynamic couple with six children under the age of 10, the clients have collaborated with the designers for years. "We've done homes for them in Aspen, in Michigan and here in Southern California," says Trout. "We've grown up together."

The home's decidedly traditional exterior belies the bold, beautiful design inside. "They like us to create something

different every time," Bonesteel says. While pushing boundaries was essential, the space is at its core a bustling family hub. "The design has to perform," says Trout. "With six kids, it's a very active house. We get that, as we lead that life as well."



Just minutes from the beach and wrapped inside a greenway, the house takes full advantage of the California sunshine with towering steel-framed windows in every room. "They are super affected by light," says Bonesteel of her clients. "We weren't allowed to cover the windows at all. The curtains take up only a quarter-inch on either side."

Industrial elements recur throughout, from steel railings to plastered brick walls. "The materials are raw and beautiful, not really fancied up a lot," Trout says. "The decorating is almost like a backdrop to the nature and the architecture itself."

Form and function were fundamental when curating the home's furniture and accessories, too. "The design has more of an androgynous beat to it," says Trout, "which is part of making the house work for kids. There's not a lot of extra things. The only furniture is what you actually need."



*Left:* The owner's home office has custom brass and walnut built-ins that house a collection of machine parts. The walls are upholstered in grayish blue flannel, while Heidi Bonesteel designed the midcentury desk with a return that has shallow bookshelves in front. The chandelier is **APPARATUS**, and the armchair is from **DESIGN WITHIN REACH**.

*Right:* A Jean Cocteau book sits on a slim **TWENTIETH** table in the master bedroom.

*Bottom right:* The bar in the family room is custom. The bar stools are from **MCGUIRE**. The lighting is from **APPARATUS**. A bit of pattern comes courtesy of **CONCEPT STUDIO** floor tile. A glass wall in the background helps reflect light in the recessed space.

*Below:* Set against floor-to-ceiling steel-framed windows, the breakfast nook's **EERO SAARINEN** table and chairs can withstand lots of child's play. The fabric on the chairs is from **KNOLL**. The vase is from **LOVE ADORNED**. The pendant is **THE URBAN ELECTRIC CO.**



Because the clients favor a tight color palette ("There's actually only one shade of blue they like," jokes Trout), personality and punch come courtesy of bold midcentury lines, dramatic lighting and graphic Moroccan tile. And then there's the art.

Like their relationship with Bonesteel Trout Hall, the clients have long worked with Lake Forest-based art consultant Anne Mennealy, who loves to showcase California artists. "They're always open to the unexpected," says Mennealy. "They love artwork that 'owns' the room." Two such high-impact examples: a three-story twisted-rope installation along the stairs and a wall sculpture composed of romance novels that spell "Forever." It seems the family bond as well as the design union grows stronger with each home. "They both care; they will stand up for what they like," says Bonesteel. "That's a great relationship." •





Above: In the tranquil master bedroom, a veneer chevron wallpaper by **PHILLIP JEFFRIES** adds subtle sheen. Sheer linen drapery lets in lots of natural light. The bed is by **HOLLY LUNT**. A pair of **DAVID WHEELER** vases were made into lamps. The linens are **SOCIETY LIMONTA**. The accent pillows are from **ROSEMARY HALLGARTEN** and **COMMUNE DESIGN**. Below: A considerable blank space, the designers created a warm and witty family hub in a recessed basement area. Finishes include cork wall coverings, a brick covering behind the romance-novel art piece by **JOHN SALVEST** and dramatic black beams along the ceiling. The sectional and pillows are by **FLEXFORM**. The rug is from **MERIDA**.

